

# Volumetric and Multidimensional Modeling using HyperFun

A. Pasko, V. Adzhiev, V. Savchenko

[www.hyperfun.org](http://www.hyperfun.org)

*GraphiCon'2000*

# Content

- HyperFun team
- F-rep: surfaces, solids, volumes, ND
- Project motivation
- HyperFun language and interpreter
- HyperFun tools
- Applications

# HyperFun Team

- **Japan**

- *Hosei University*: Pasko, Savchenko
- *Aizu University*: Goto, Hibi, Vilbrandt
- *Credit Swiss*: Fausett

- **Russia**

- *MEPI*: Adzhiev, Ossipov, Kartasheva
- *MIPT*: Kazakov

- **France**

- *LABRI*: Schmitt

- **UK**

- *University of Warwick*: Cartwright

# Implicit Surfaces $\neq$ Blobs

A set of points with

$$i \in \{ // \}, \# @ \#$$

is an implicit surface or more precisely

**iso-valued surface (*isosurface*) of a function of three variables.**

# 3D Solids

A 3D solid is defined as

$$i \in \{A \mid A\}, \# \geq 3$$

with the implicit surface as its boundary.

Sphere:  $U^5 \{^5 0 / ^5 0\}^5 @ \# 3$

Solid ball:  $U^5 \{^5 0 / ^5 0\}^5 \geq 3$

# Volumes

Volume is a 3D point set with a scalar field

- Voxel model: 3D discrete grid + node value
- Functional model:

$i_4 + \{ \# / \# \}, \# \Rightarrow 3\# \text{ point set}$

$i_5 + \{ \# / \# \}, \# \Rightarrow 3\# \text{ scalar field}$

# F-rep: multidimensional model

$$I \#_4 \#_5 \#_q \#_3$$

- Function evaluation procedure processing a general tree structure
- Leaves: primitives (algebraic, skeleton-based, voxel, parametric, procedural)
- Nodes: operations (set-theoretic, blending, metamorphosis, sweeping, Cartesian product, Minkowski sum, etc.) + relations (collision, inclusion, etc.)

# Closure of operations on F-rep



International Conference Graphicon 2000,  
Moscow, Russia, <http://www.graphicon.ru/>

Twist





International Conference Graphicon 2000,  
Moscow, Russia, <http://www.graphicon.ru/>

Blend

# HyperFun project motivation

- Segmentation of implicit modeling
- Lack of exchange protocol
- Multidimensionality
- Cross-platform and Internet-based modeling
- Extendibility and openness
- Building applications
- Education

# HyperFun language

- HyperFun is a minimalist language
- Supports all notions of F-rep
- Multiple coordinate variables support multidimensional modeling
- Functional expressions
- Built-in operators for set-theoretic operations:  $|$ ,  $\&$ ,  $\setminus$ ,  $\sim$ ,  $@$
- F-rep library of primitives and operations

## HyperFun Project

### Language and Software Tools for F-rep Geometric Modeling

HyperFun is a simple geometric modeling language. It is intended for modeling geometric objects described in the form:

$$F(x_1, x_2, x_3, \dots, x_n) \geq 0,$$

This language is applicable to modeling algebraic and skeleton-based "implicit" surfaces, convolution surfaces, distance-based models, voxel objects, and more general F-rep objects.

The model in HyperFun is interpreted by the modeling and visualization software tools.

[HyperFun language](#)

[Overview](#) ([PS+zip](#), [PDF](#))

[Tools](#)

[Examples](#)

[Mailing list](#)



See [F-rep Home Page](#)

--This HyperFun program consists of one object:  
--union of superellipsoid, torus and soft object

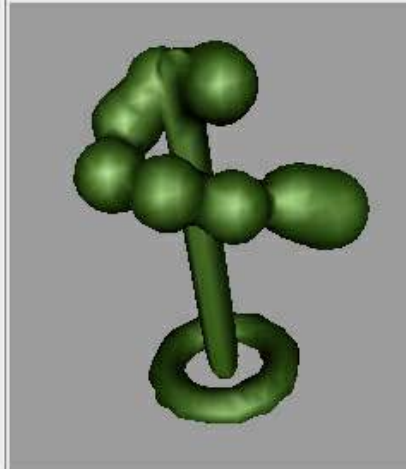
```
my_model(x[3], a[1])
{
  array x0[9], y0[9], z0[9], d[9], center[3];
  x1=x[1];
  x2=x[2];
  x3=x[3];

  -- superellipsoid by formula
  superEll = 1-(x1/0.8)^4-(x2/10)^4-(x3/0.8)^4;

  -- torus by library function
  center = [0, -9, 0];
  torus = hfTorusY(x,center,3.5,1);

  -- soft object
  x0 = [2.,1.4, -1.4, -3, -3, 0, 2.5, 5., 6.5];
  y0 = [8, 8, 8, 6.5, 5, 4.5, 3, 2, 1];
  z0 = [0, -1.4,-1.4, 0, 3, 4, 2.5, 0, -1];
  d = [2.5, 2.5, 2.5, 2.5, 2.5, 2.5, 2.5, 2.7, 3];
  sum = 0.;
  i = 1;
  while (i<10) loop
    xt = x[1] - x0[i];
    yt = x[2] - y0[i];
    zt = x[3] - z0[i];
    r = sqrt(xt*xt+yt*yt+zt*zt);
    if (r <= d[i]) then
      r2 = r*r; r4 = r2*r2; r6 = r4*r2;
      d2 = d[i]^2; d4 = d2*d2; d6 = d4*d2;
      sum = sum + (1 - 22*r2/(9*d2) +
        17*r4/(9*d4) - 4*r6/(9*d6));
    endif;
    i = i+1;
  endloop;
  soft = sum - 0.2;

  -- final model as set-theoretic union
  my_model = superEll | torus | soft;
}
```



# HyperFun interpreter

API is a suite of functions in ANSI C:

***Parse*** function:

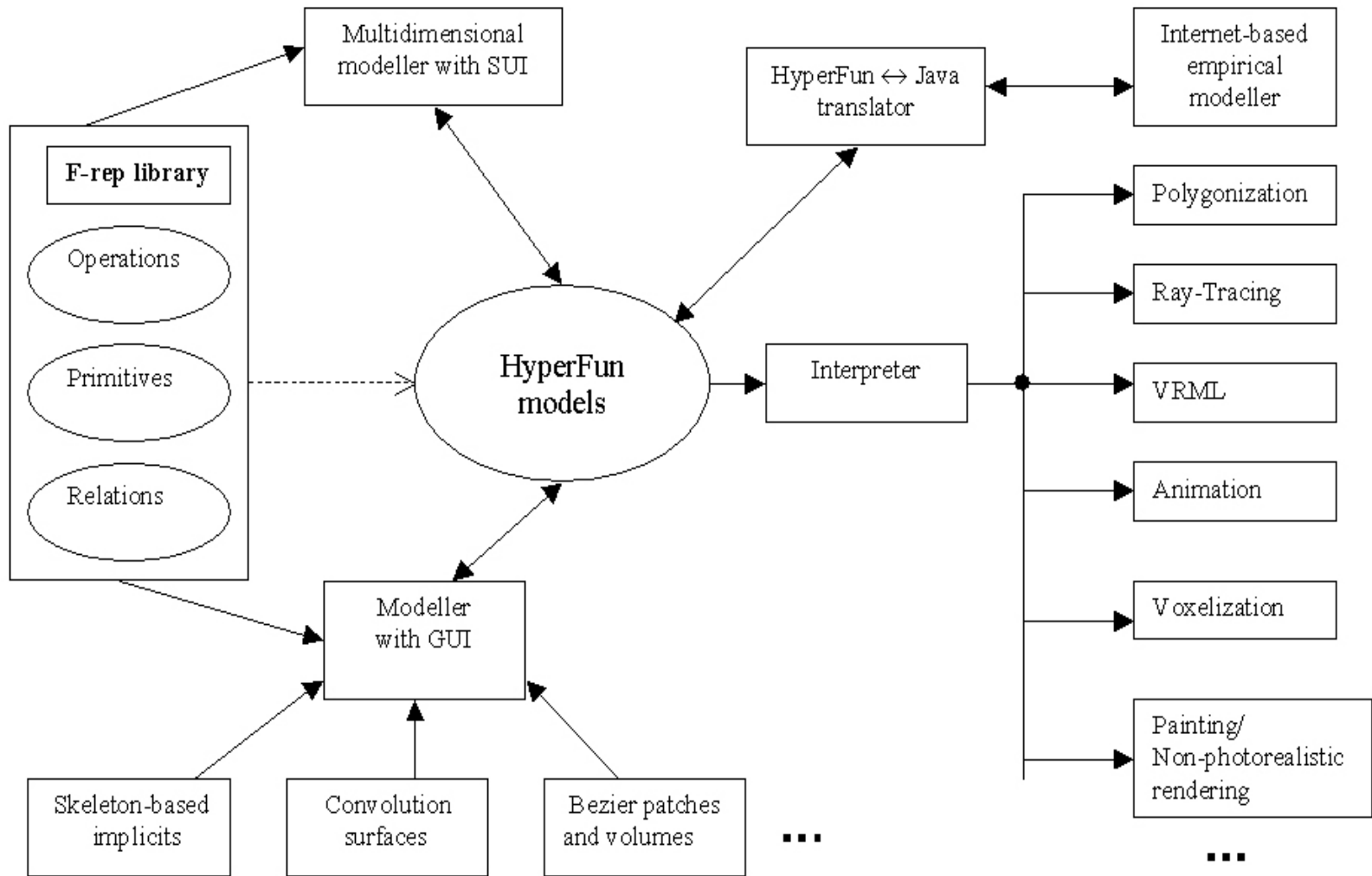
- syntax analysis
- generates internal tree structure (*byte-code*)
- outputs a list of error messages
- is invoked just once for a model.

***Calc*** function performs function evaluation at the given point.

# HyperFun Tools and Applications

[www.hyperfun.org](http://www.hyperfun.org)

# System architecture



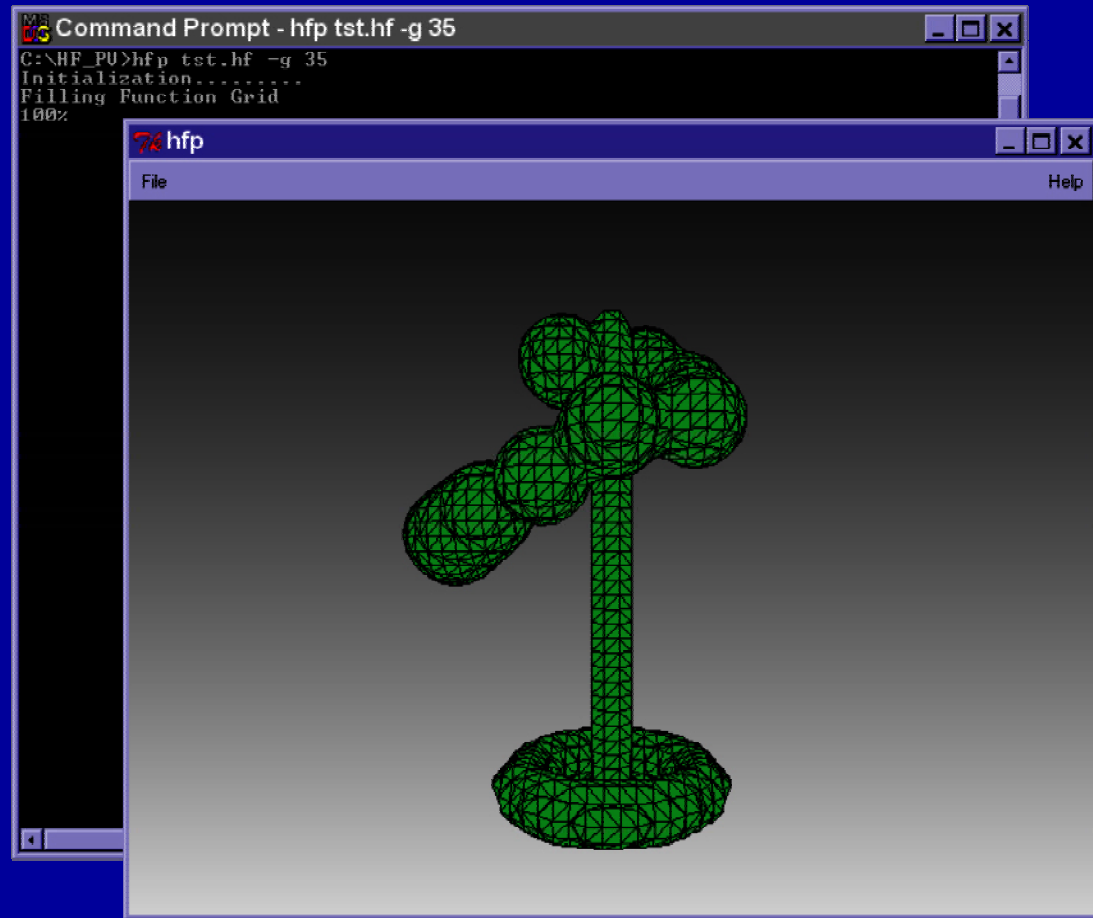


# HyperFun Tools

- Available on-line:
  - HyperFun Polygonizer
  - HyperFun for POV-Ray
- Graphical User Interface:
  - Skeleton modeling (convolution surfaces)
  - Construction Tree
  - Special Interfaces (volume splines)
- HyperFun-to-Java compiler and Empirical Worlds
- GNU++ license

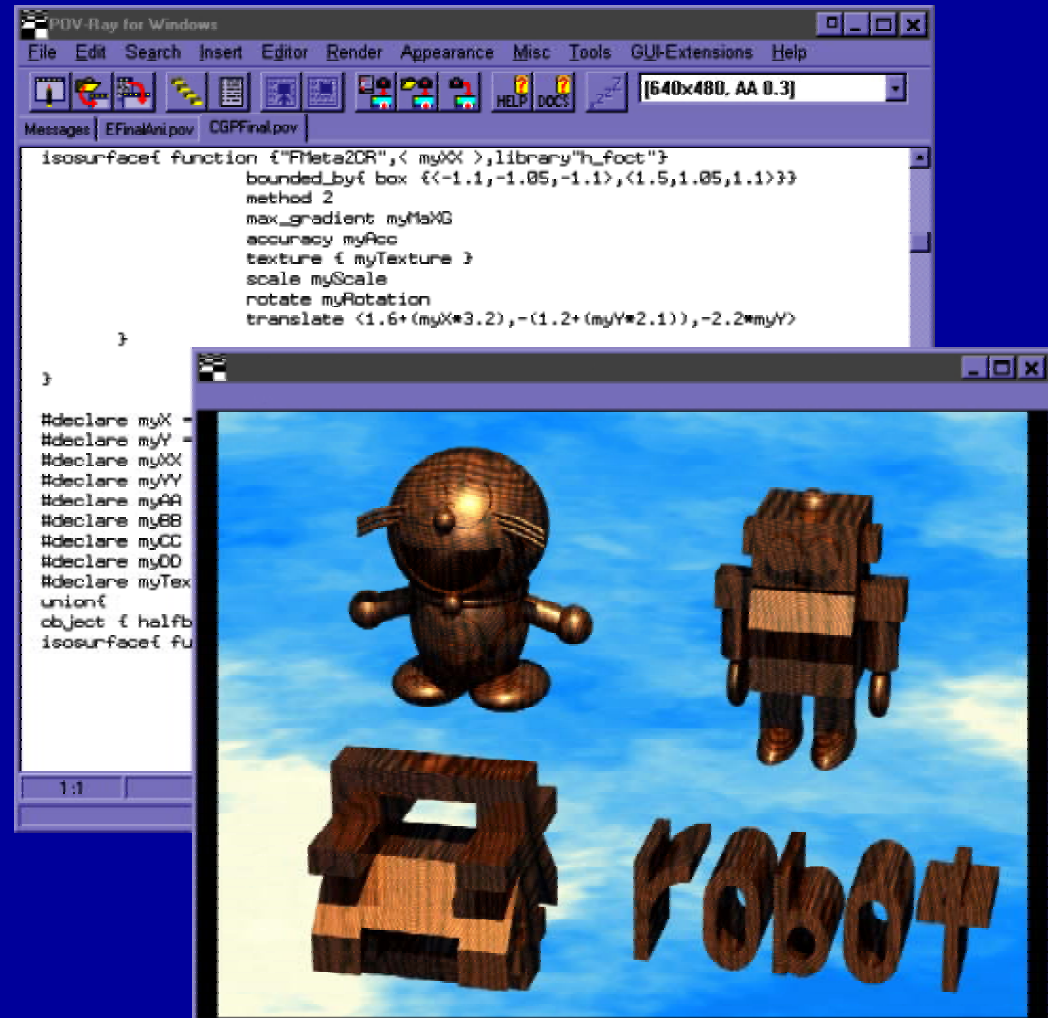
# HyperFun Polygonizer

- Polygonization algorithm [Pasko et al. 1988] using hyperbolic arcs
- Command line interface
- VRML export
- MAM/VRS + Tcl/Tk
- Multi-Platform:
  - Windows
  - Unix
  - Linux



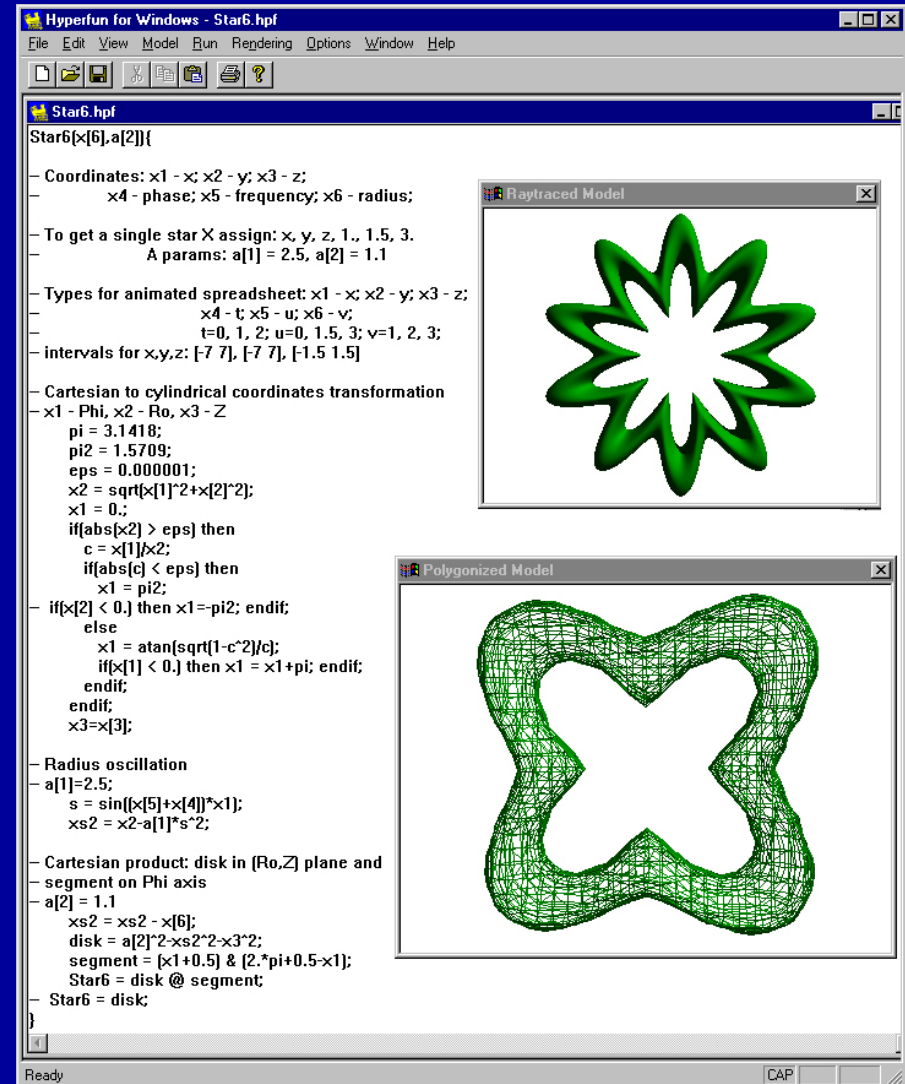
# HyperFun for POV-Ray

- Uses Suzuki's Isosurface Patch
- HyperFun Objects manipulated as POV-Ray Objects
- Object Parameters and Coordinate Mappings
- Animation Capabilities
- Multi-Platform:
  - Windows
  - Unix
  - Linux



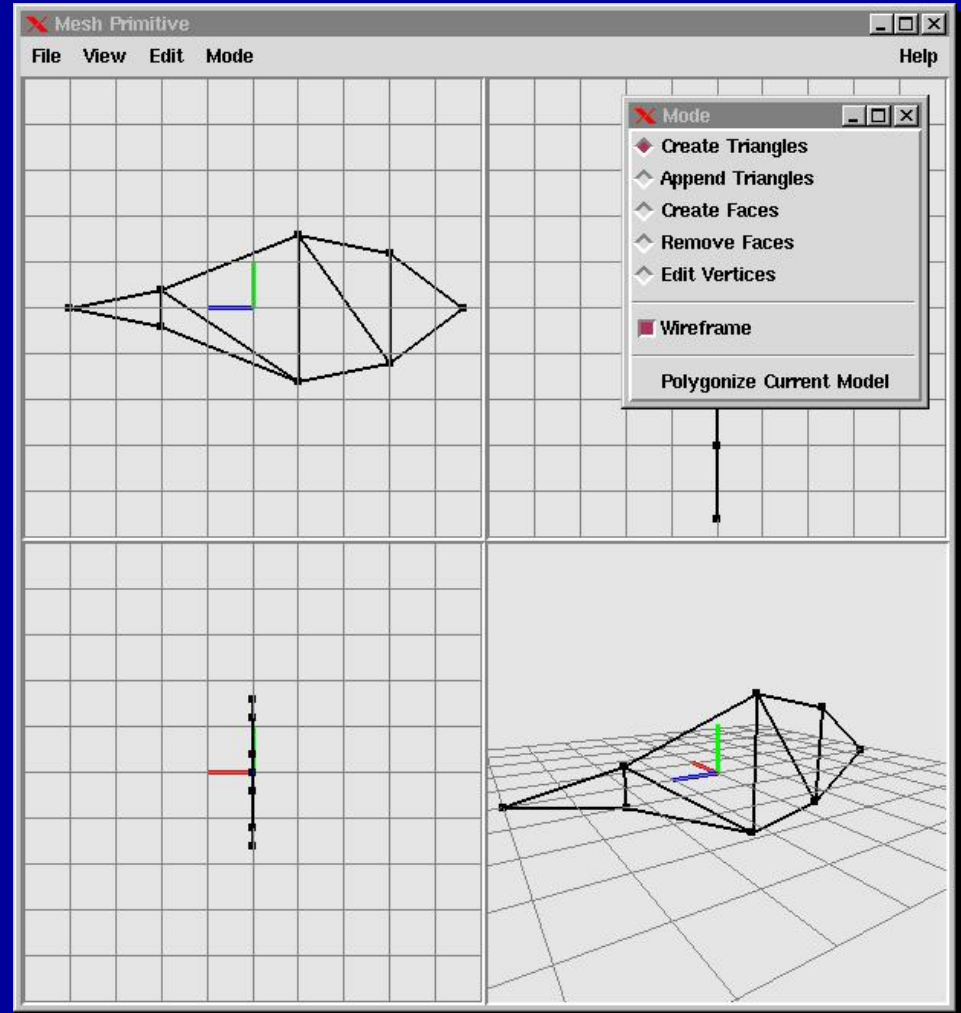
# Symbolic Windows Interface

- Input-Edit-Output HyperFun models
- Scene composing
- Coordinate mapping
- Modeling and viewing parameters control
- Polygonization and ray-tracing

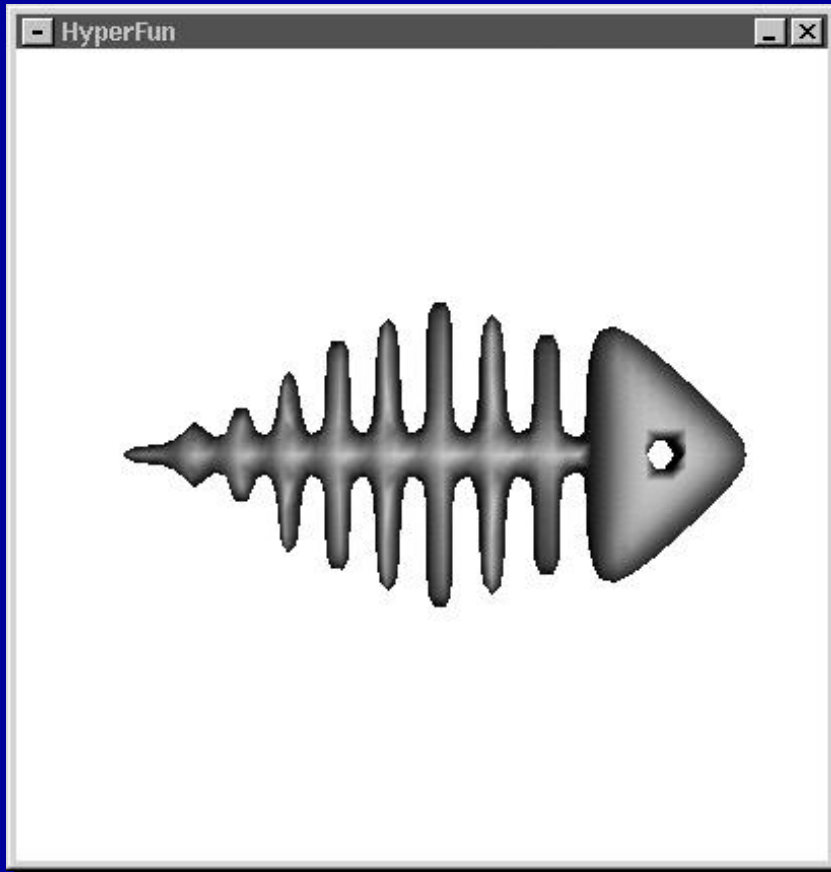


# Interactive Skeleton Modeling

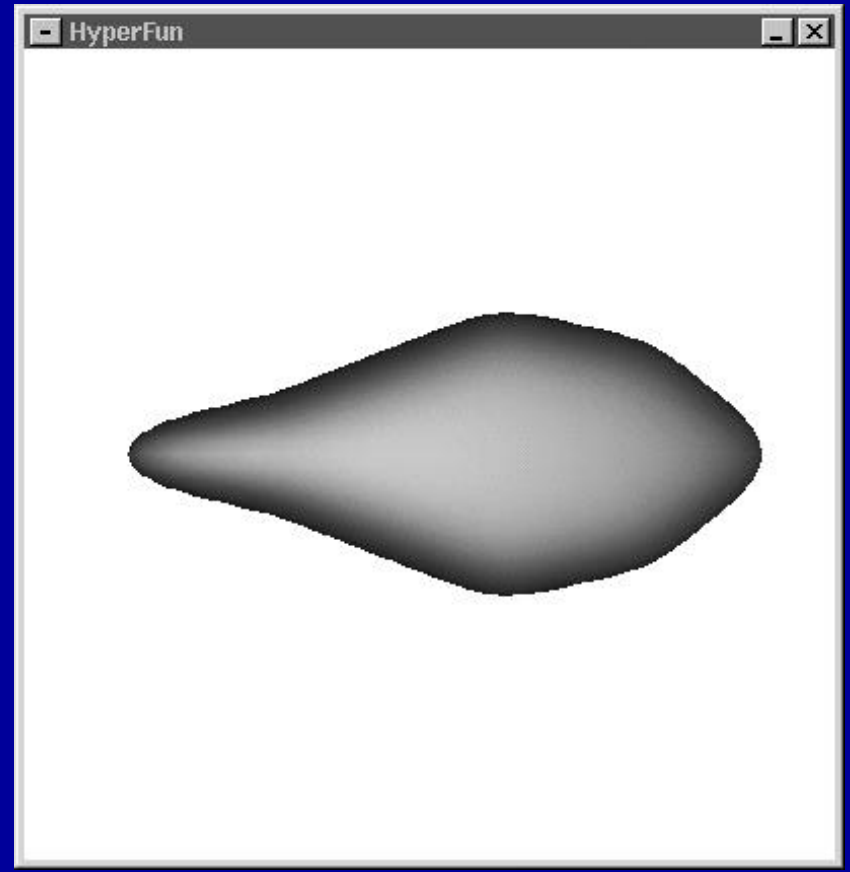
- Interactive modeling of skeletons for convolution surfaces:
  - Points
  - Lines
  - Arcs
  - Triangles
- Export to HyperFun
- Extendable GUI
- To appear in EG'2000 (short papers)



# Polygonization: fish bones and body

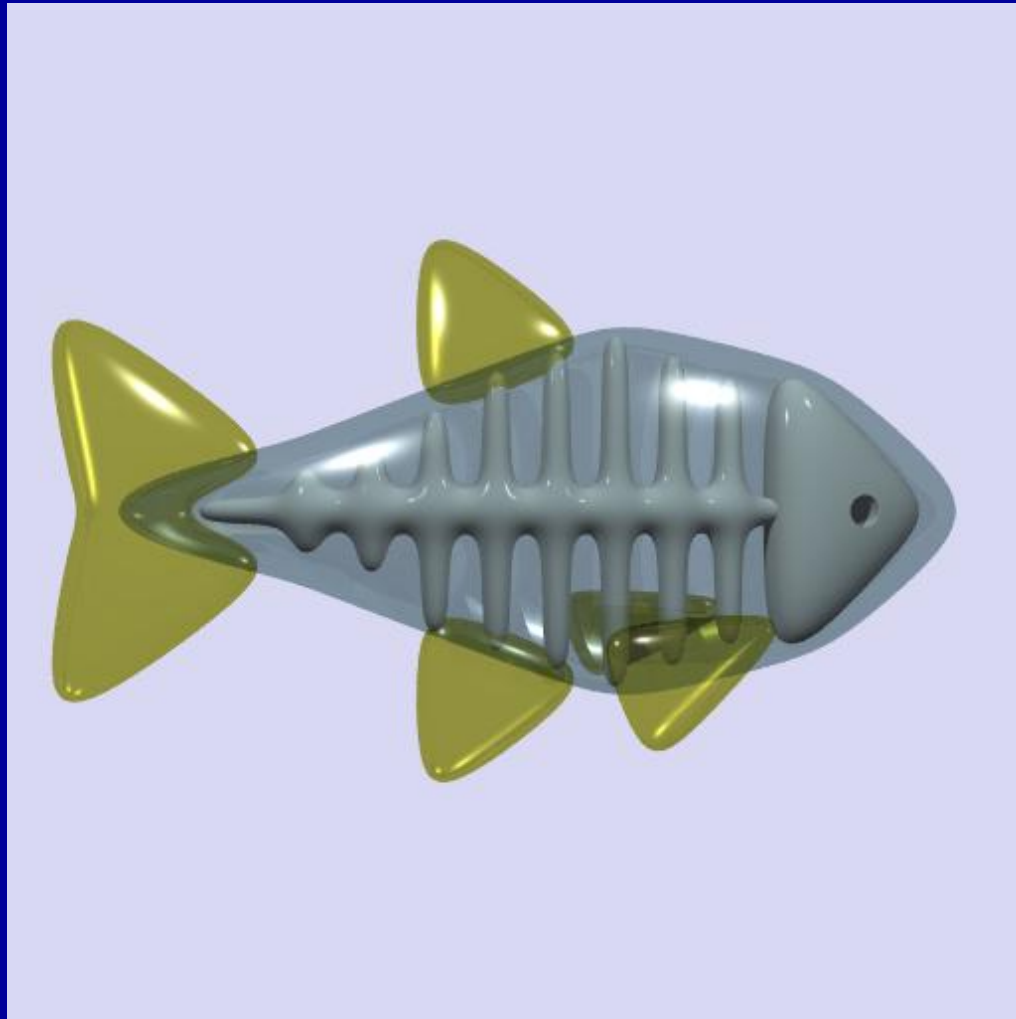


Skeleton lines



Skeleton triangles

# Ray-traced convolution fish



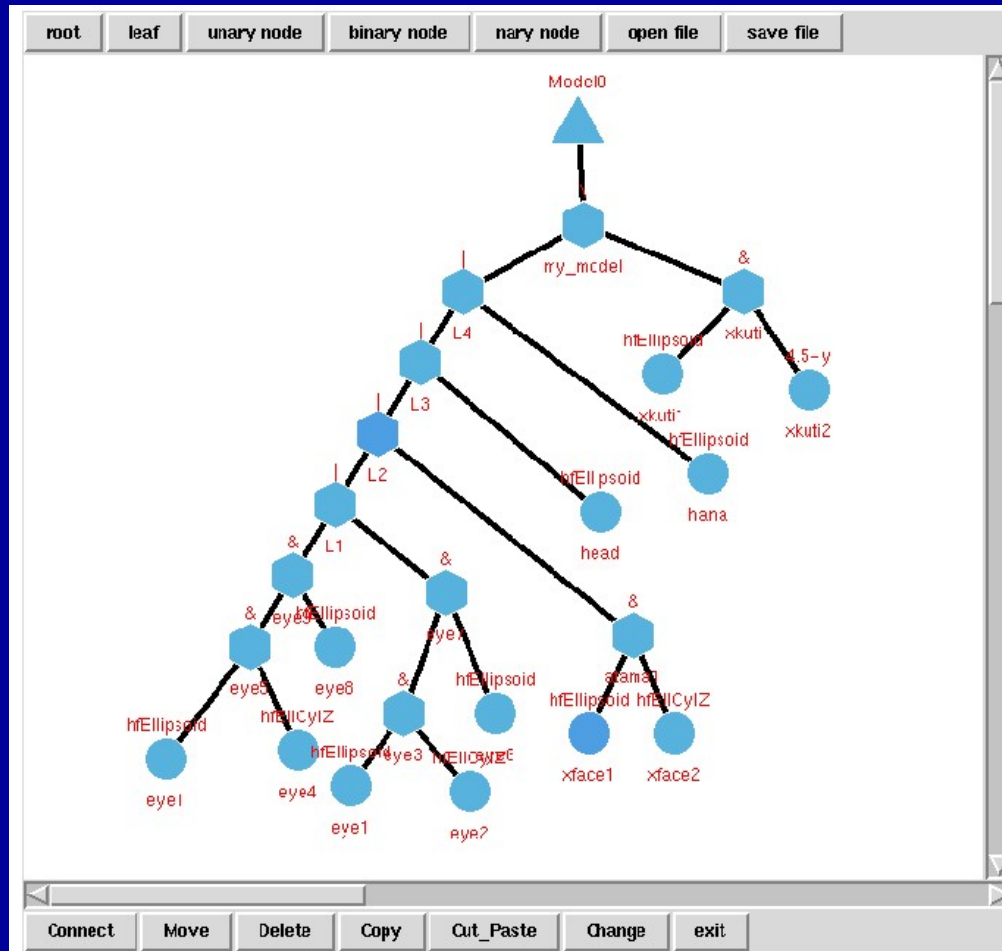
International Conference Graphicon 2000,  
Moscow, Russia, <http://www.graphicon.ru/>

# Construction Tree

- Graphical display of the F-rep construction tree:
  - root
  - leaves (primitives)
  - nodes (unary, binary, n-ary operations)
- Direct manipulation on the tree:
  - Create/Delete nodes
  - Connect nodes
  - Edit parameters of nodes
- Import and export to HyperFun



# Construction Tree Import



```

-- head final
L1 = eye9 | eye7;

L2 = L1 | atama1;

L3 = L2 | head;

L4 = L3 | hana;

my_model = L4 \ xkuti;

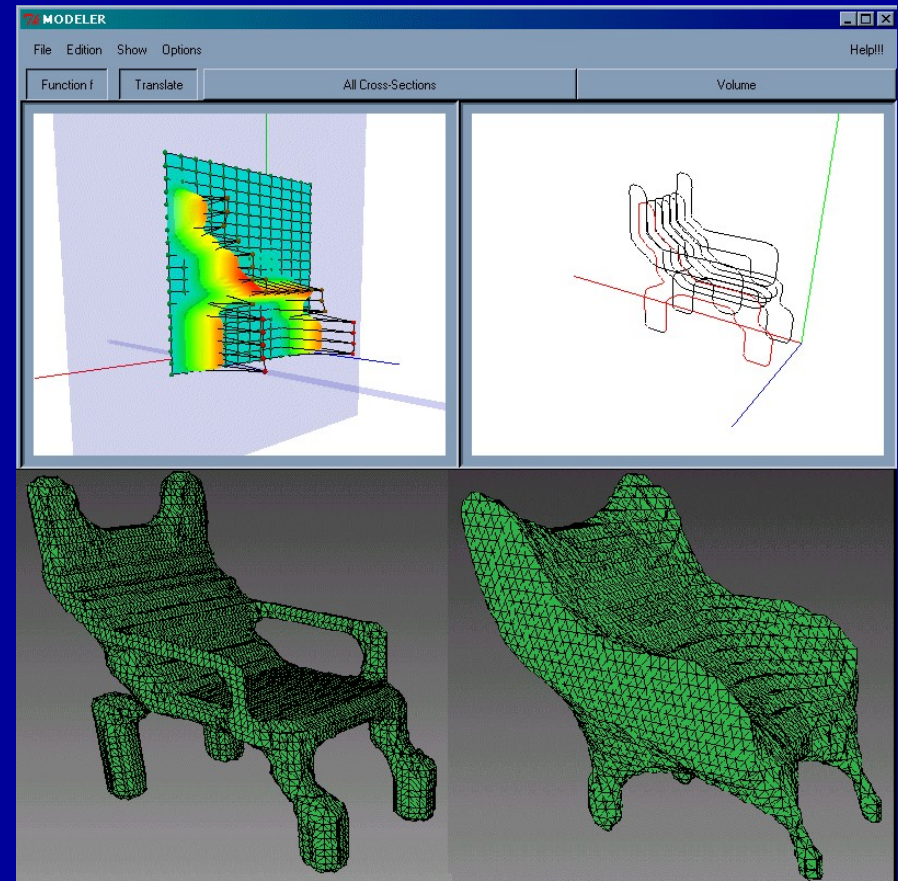
}

```

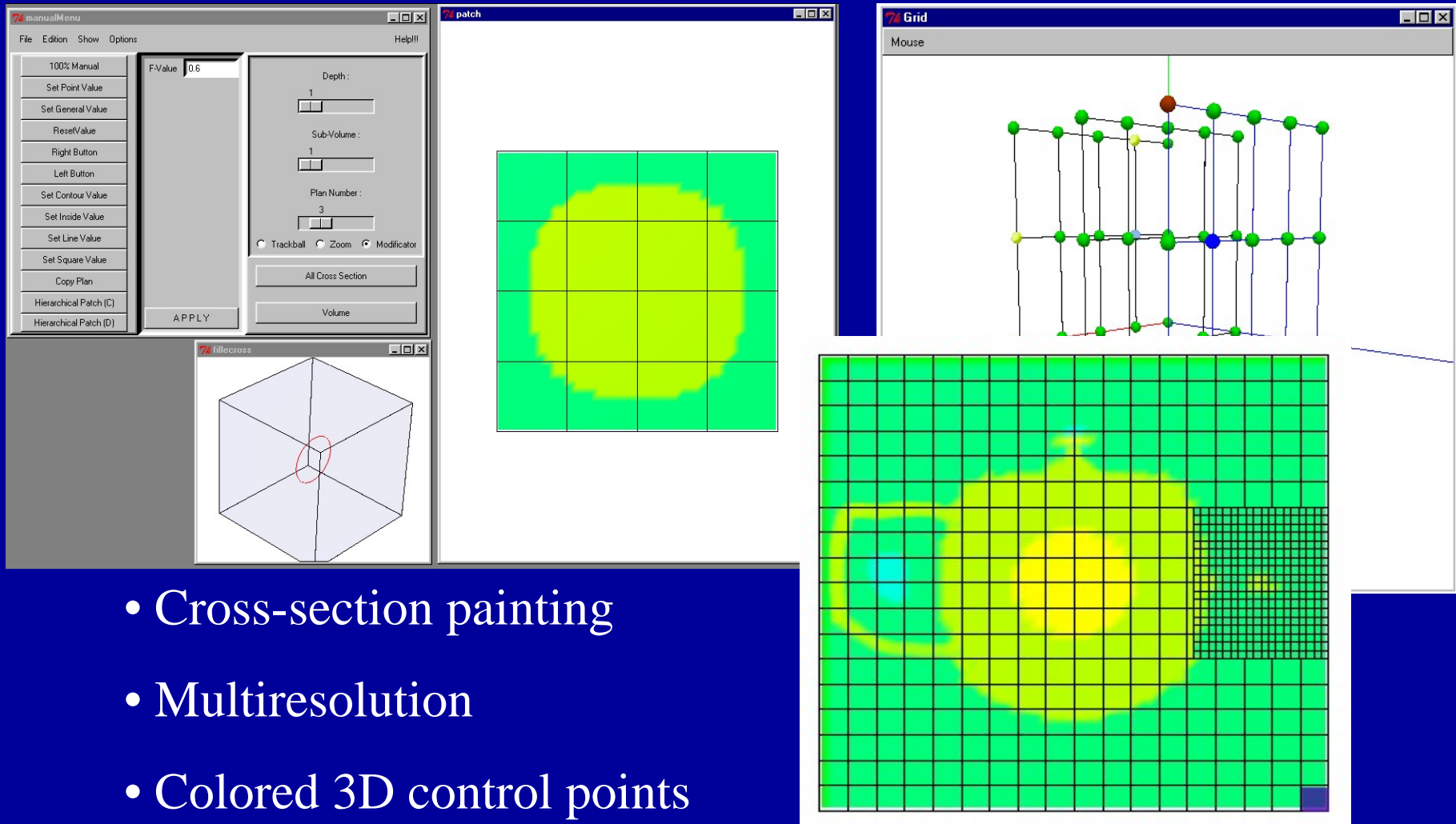


# Sculpting Using 4D Volume Splines

- Interactive control of 4D Bezier or B-splines
- Multiresolution
- Export to HyperFun
- B. Schmitt  
(U. Bordeaux),  
*Implicit Surfaces '99*

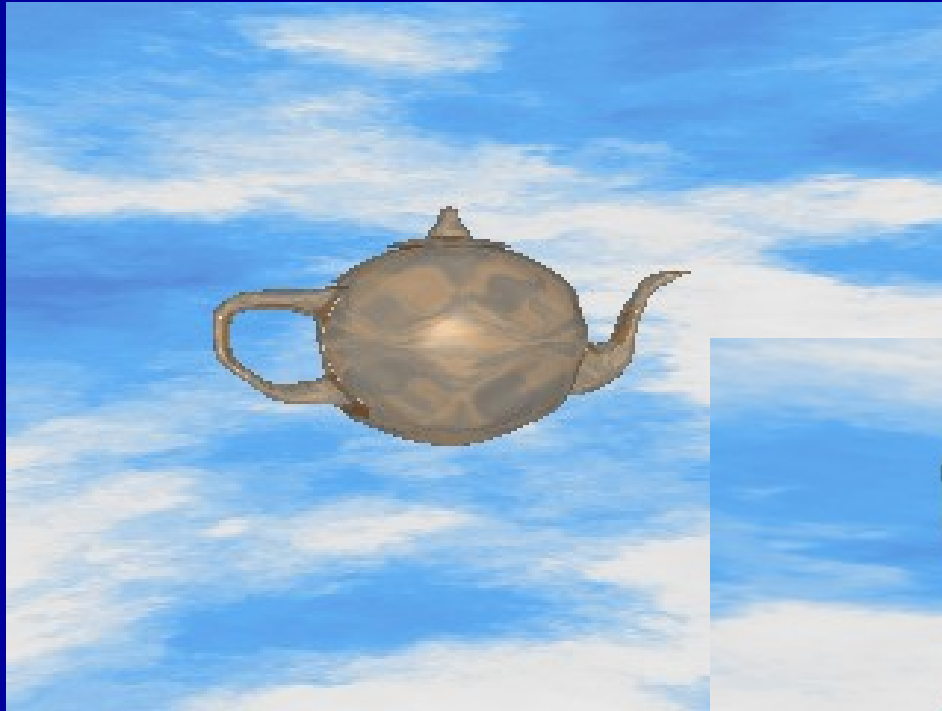


# Volume Spline Control Techniques

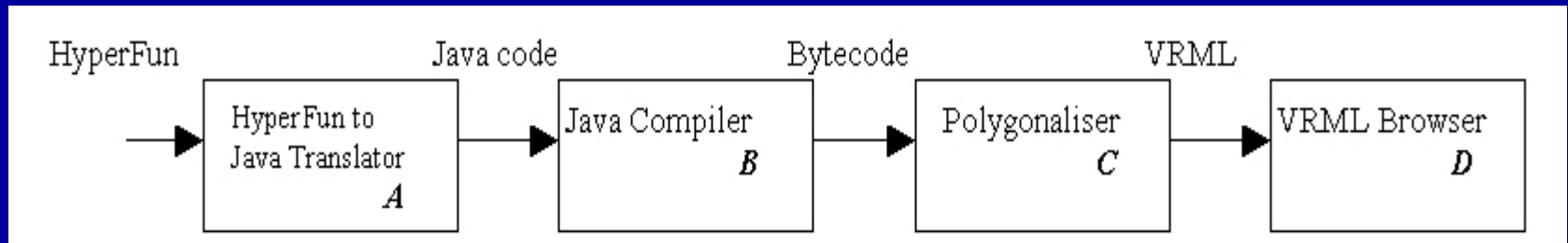


- Cross-section painting
- Multiresolution
- Colored 3D control points

# Volume spline primitives



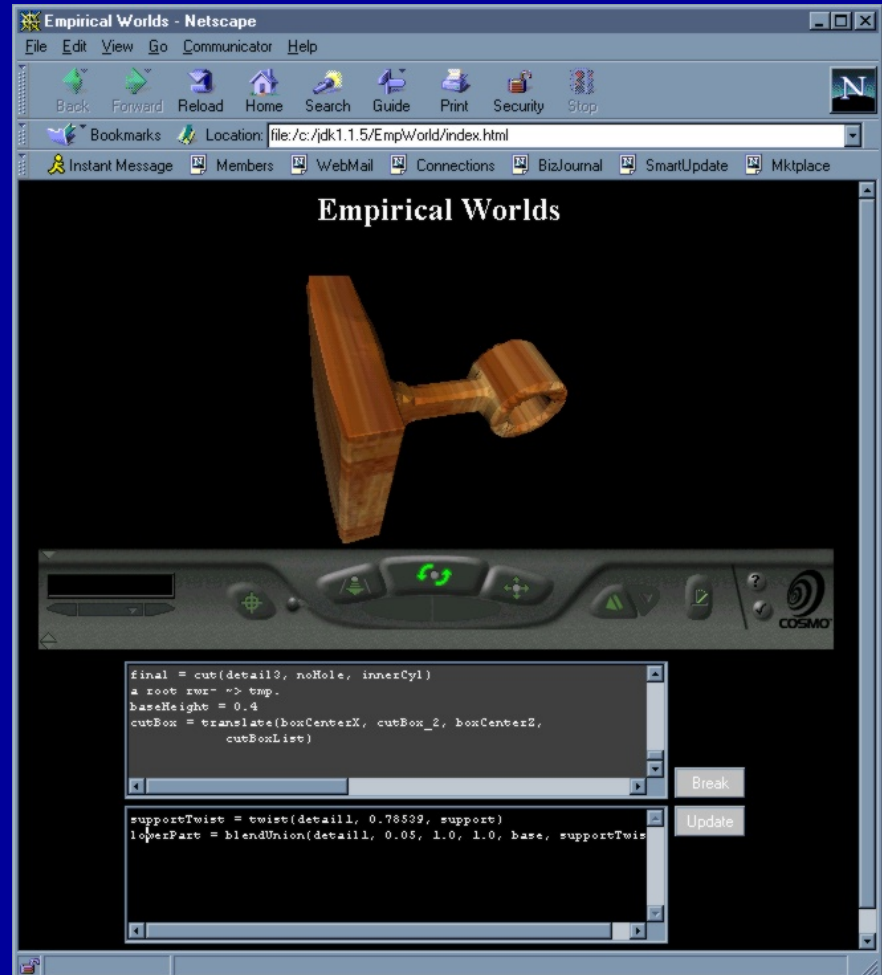
# HyperFun-to-Java compiler



- HyperFun  $\Rightarrow$  Java code  $\Rightarrow$  Bytecode  $\Rightarrow$  Application
- Alternative approach to fast processing HyperFun shapes
- Platform independent and easy distribution
- Uses polygonizer in Java
- R. Cartwright (U. of Warwick), *Implicit Surfaces '99*

# Empirical Worlds

- Spreadsheet-like environment
- Collaborative and concurrent interaction of agents
- Incremental development of shape models
- R. Cartwright (BBC Research)



# GNU++ License



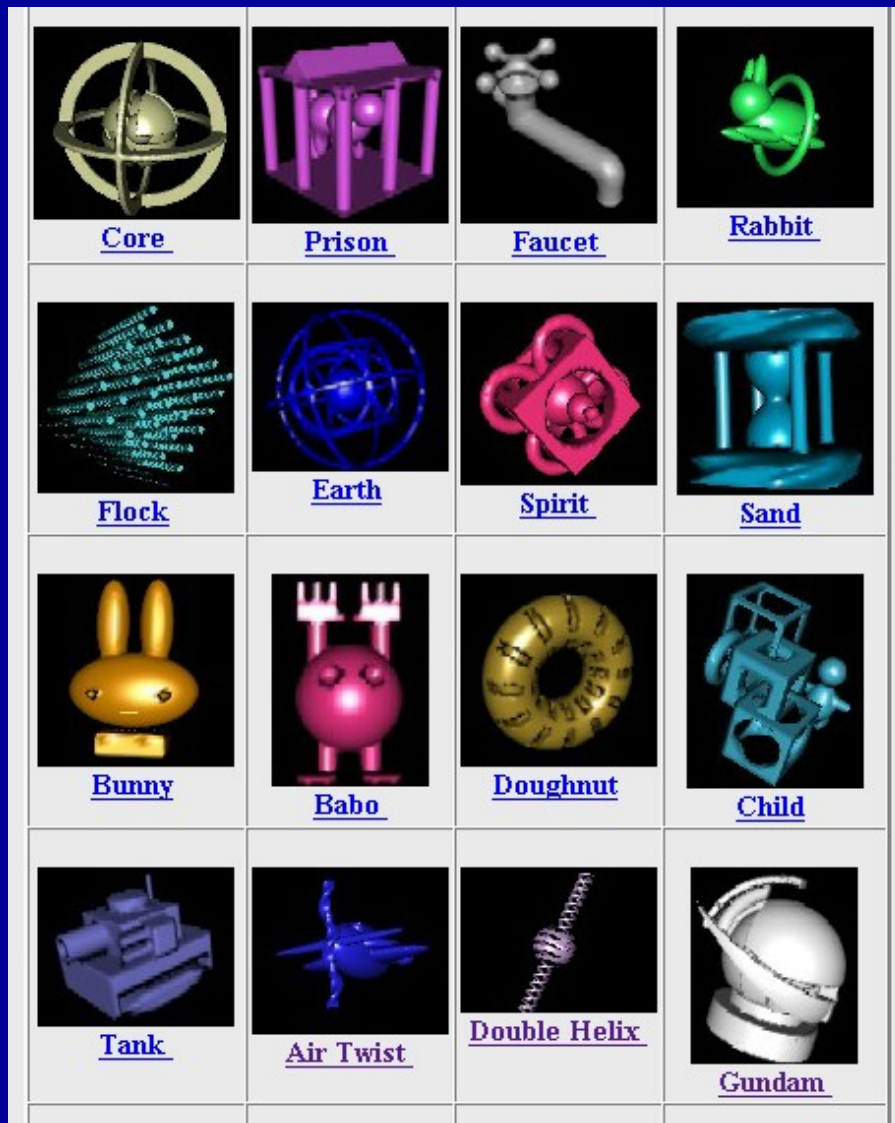
- GNU GPL + Human rights  
+ Environmental rights
- Product is not during its making or application to promote the violation of Human Rights
- Product is not to be used to promote or support actions that impoverish the environment



# Applications

- Research tool
- Education:  
    geometry, CG, modeling, compilers
- Art and culture
- Animation
- CAD → B-rep + CSG + F-rep + Voxels

# HyperFun Gallery by Students



# Virtual Lacquer Ware



International Conference Graphicon 2000,  
Moscow, Russia, <http://www.graphicon.ru/>

HyperFun Project

# Space-Time and Higher Dimensional Modeling for Animation

E. Fausett, A. Pasko, V. Adzhiev

# Multidimensional F-Rep

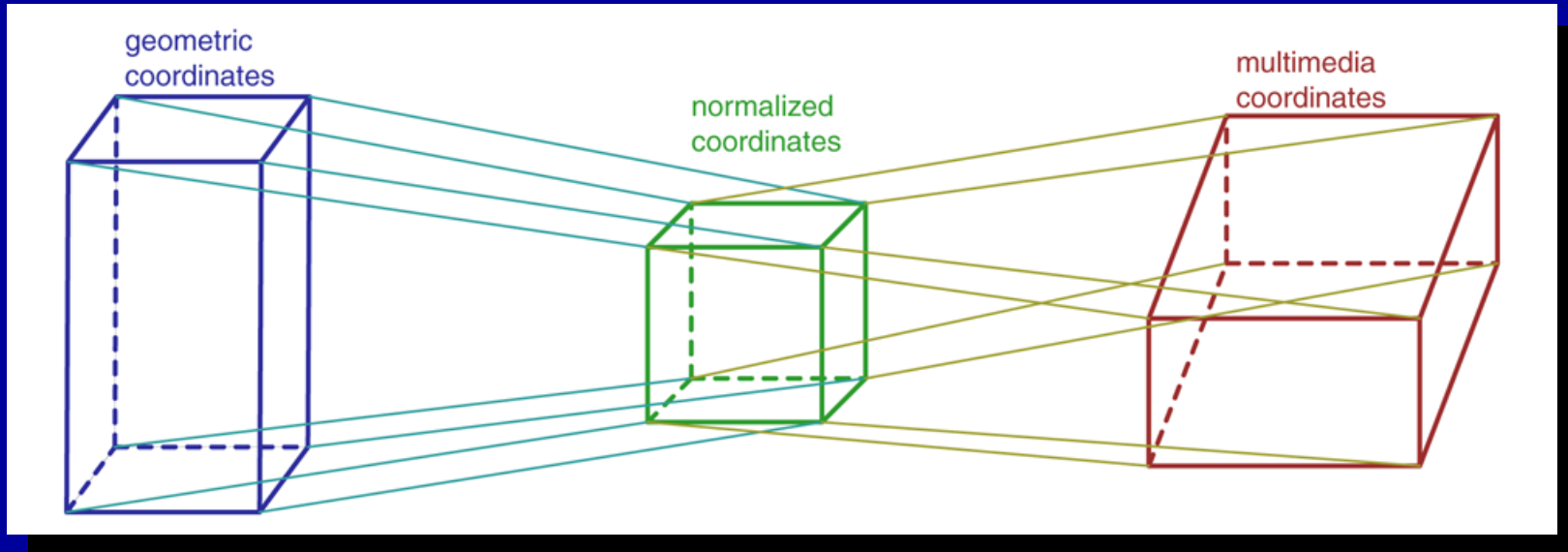
## Space-Time Modeling

$$F(x, y, z, t) \geq 0$$

## Higher Dimensional Modeling

$$F(x_1, x_2, x_3, x_4, x_5, \dots) \geq 0$$

# Coordinate Mapping



- F-Rep Object is Mapped to Normalized Coordinates
- Normalized Coordinates are then Mapped to Multimedia Coordinates

# Multimedia Coordinates

- **World**
  - 2D (x, y) or 3D (x, y, z)
- **Dynamic**
  - single (t) or multiple (t<sub>1</sub>, t<sub>2</sub>)
- **Spreadsheet**
  - (u, v)
- **Transformation**
- **Audio/Video**
- **Other**
  - Haptic

# Case: 3D Metamorphosis

- Basic Modeling
- Dimension Increase
- Mapping
- Rendering



# Basic 3D Modeling



*Cat*



*NiHon*



*Robot*



*Rob\_let*

# Dimension Increase

## Bi-linear Interpolation

$$\begin{aligned} \text{Meta5D}(x_1, x_2, x_3, x_4, x_5) = & \\ & \left( \begin{array}{l} \text{Cat}(x_1, x_2, x_3) \cdot (1 - x_4) \\ + \text{Robot}(x_1, x_2, x_3) \cdot x_4 \end{array} \right) \cdot (1 - x_5) + \left( \begin{array}{l} \text{NiHon}(x_1, x_2, x_3) \cdot (1 - x_4) \\ + \text{Rob\_let}(x_1, x_2, x_3) \cdot x_4 \end{array} \right) \cdot x_5 \end{aligned}$$

# Coordinate Mapping

$x_1 \rightarrow x$  (*world x*)

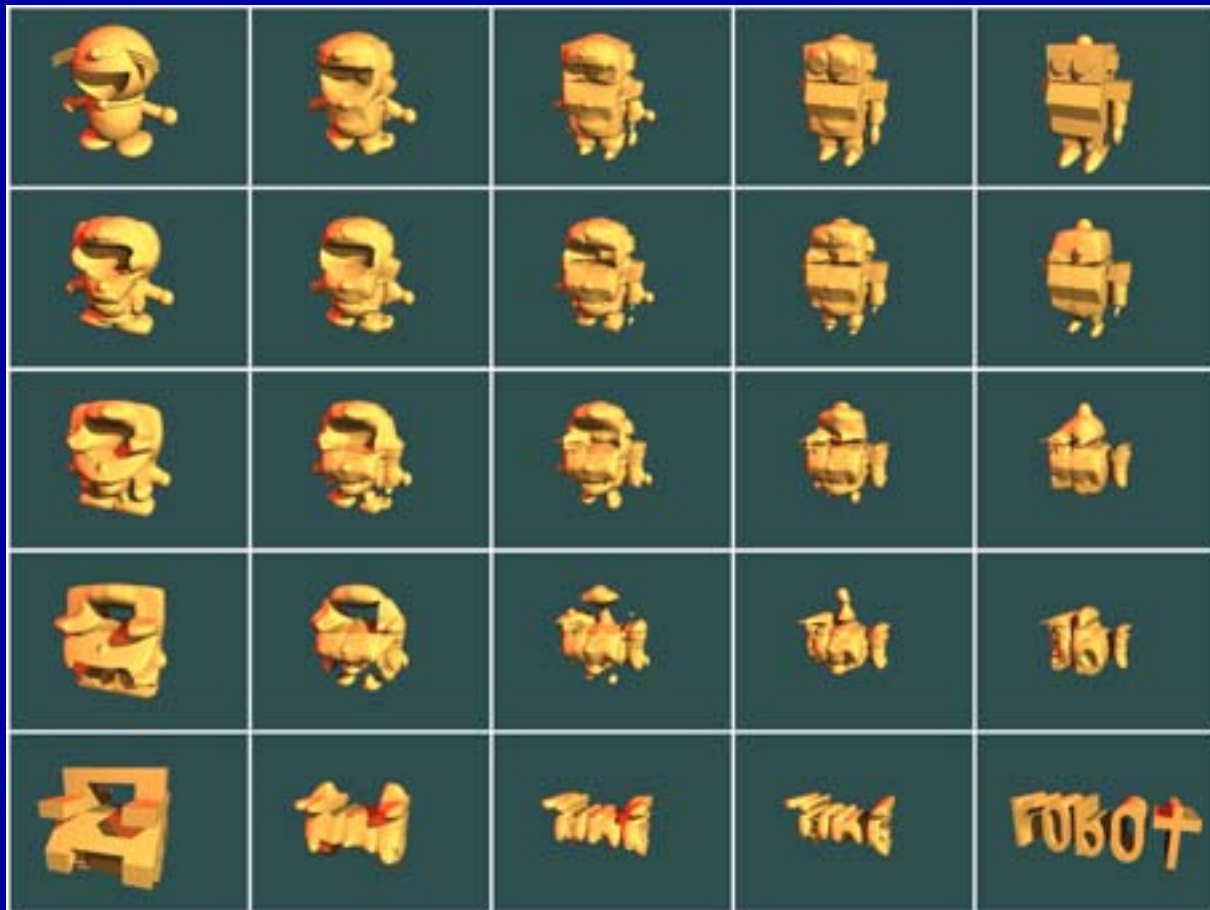
$x_2 \rightarrow y$  (*world y*)

$x_3 \rightarrow z$  (*world z*)

$x_4 \rightarrow u$  (*spreadsheet u*)

$x_5 \rightarrow v$  (*spreadsheet v*)

# Spreadsheet Rendering



International Conference Graphicon 2000,  
Moscow, Russia, <http://www.graphicon.ru/>

# Coordinate Mapping

$x_1 \rightarrow x$  (*world x*)

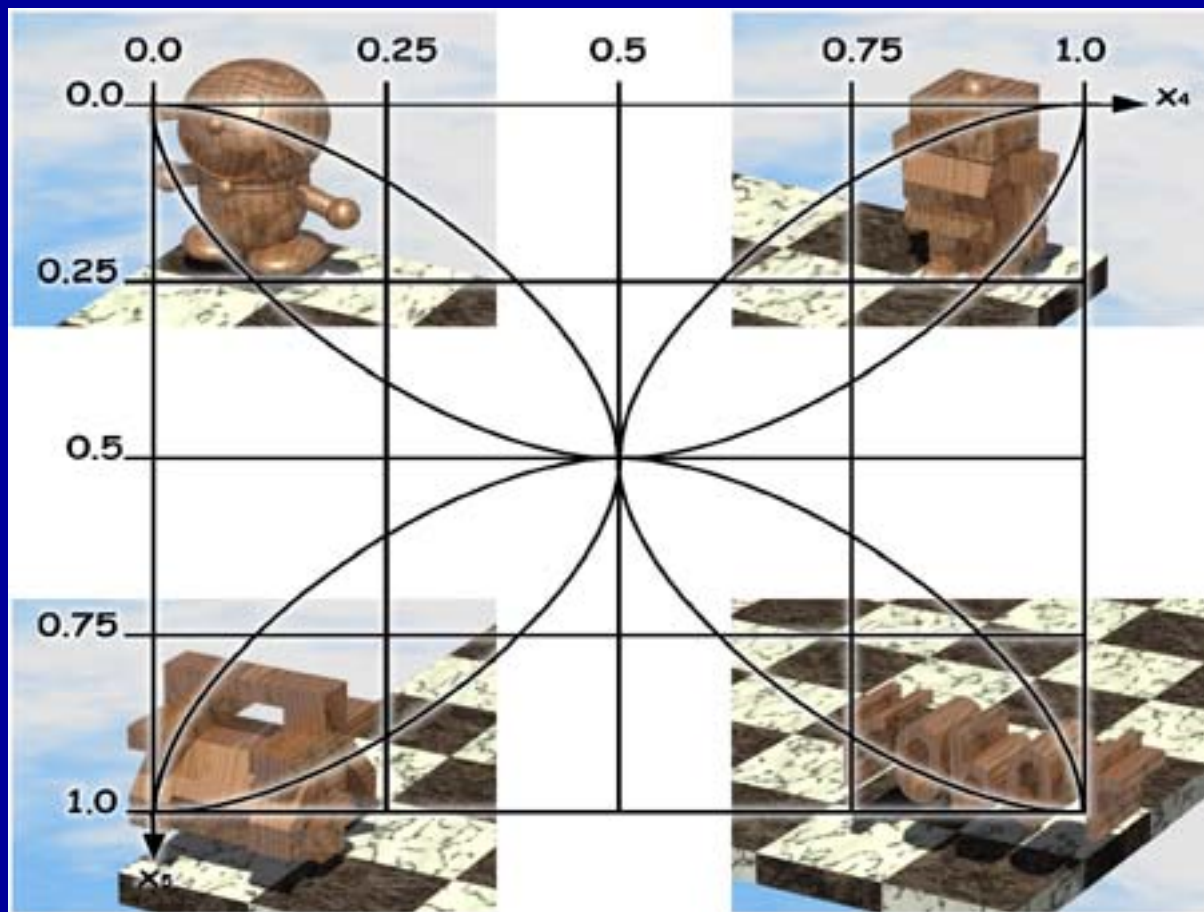
$x_2 \rightarrow y$  (*world y*)

$x_3 \rightarrow z$  (*world z*)

$x_4 \rightarrow t_1$  (*dynamic*)

$x_5 \rightarrow t_2$  (*dynamic*)

# Animation Path in $t_1 t_2$ Plane



**Show animation**  
**“Homotopic Fun in 5D Space”**

**The End**